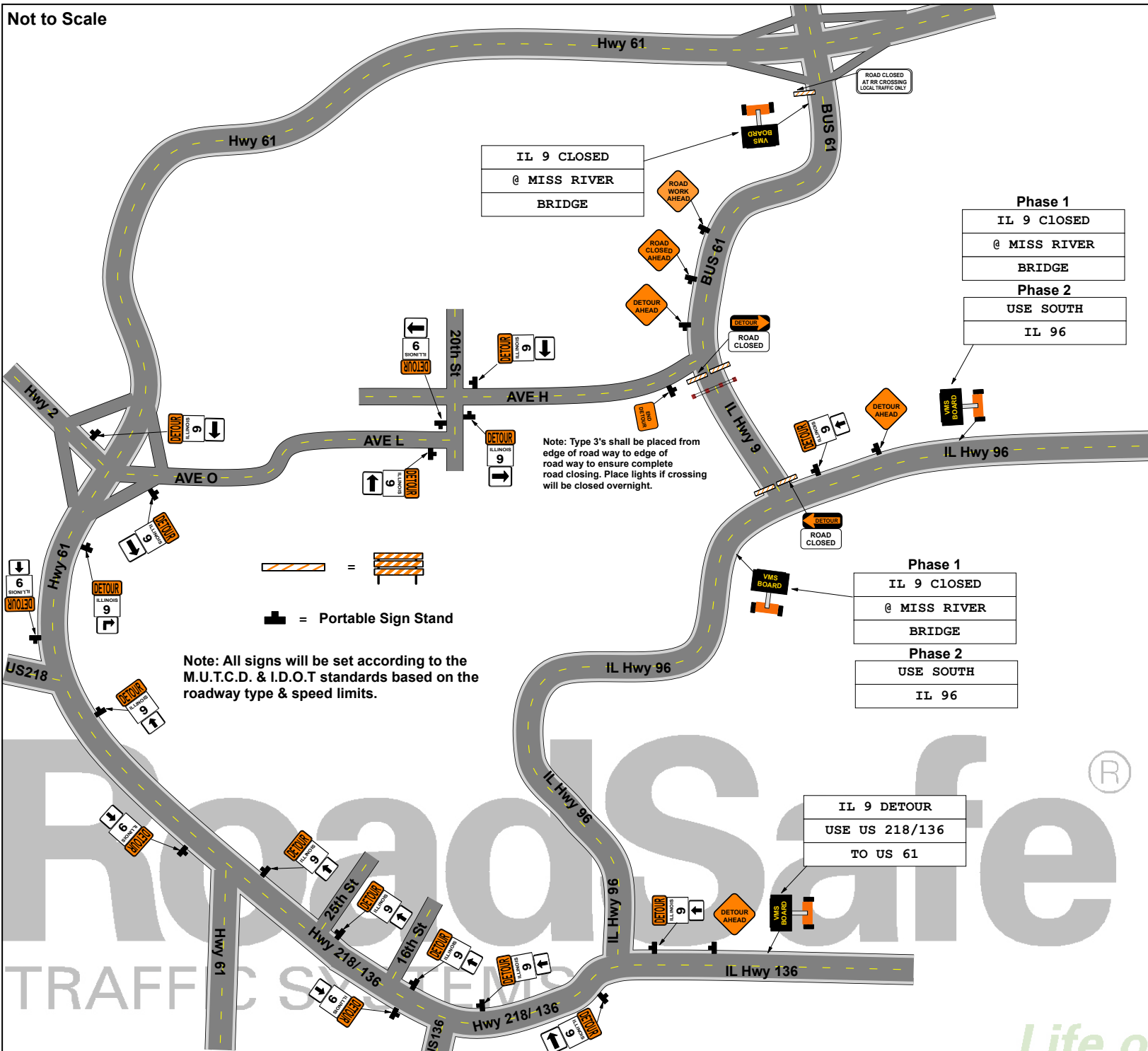
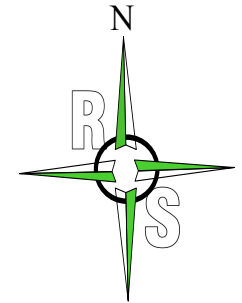


Not to Scale



IL 9 CLOSED
@ MISS RIVER
BRIDGE

Phase 1
IL 9 CLOSED
@ MISS RIVER
BRIDGE
Phase 2
USE SOUTH
IL 96

Phase 1
IL 9 CLOSED
@ MISS RIVER
BRIDGE
Phase 2
USE SOUTH
IL 96

IL 9 DETOUR
USE US 218/136
TO US 61

Note: All signs will be set according to the M.U.T.C.D. & I.D.O.T standards based on the roadway type & speed limits.

Note: Type 3's shall be placed from edge of road way to edge of road way to ensure complete road closing. Place lights if crossing will be closed overnight.

=
= Portable Sign Stand

Date: 5/10/17 Author: N.DRAKE Project: IA Fort Madison Hwy 9 Bus61 Sheet 1of1
Comments:
THIS TRAFFIC CONTROL PLAN WAS DRAFTED IN ACCORDANCE WITH M.U.T.C.D & I.D.O.T. SPECIFICATIONS.
ROADSAFE TRAFFIC SYSTEMS PROVIDED THIS DRAFT TO THE CUSTOMER AS A SERVICE & IS TO BE SUBMITTED TO THE AUTHORITY AGENCY FOR REVIEW AND MODIFICATION IF NEEDED.
ROADSAFE TRAFFIC SYSTEMS ASSUMES NO LIABILITY FOR ACCURACY OR VALIDITY.

